



KloudVision™

Video data and camera analytics capabilities that enhance the power of the Kloudspot platform

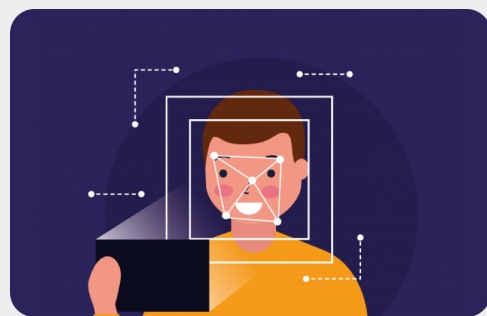
Highlights:

- Video processing service using artificial intelligence to classify and contextualize video data
- Ingests video from virtually any connected camera to create enhanced data mashups for full visibility
- Extracts deep contextual information to enable real-world engagements that measure demographics, social distancing, mask and PPE compliance, and space density.
- Processes video feeds using edge devices on the network, so footage remains on-premise - making the solution secure.

Some use cases:



Footfall counting, occupancy monitoring, PPE detection



Discover demographics, detect emotions interests and actions

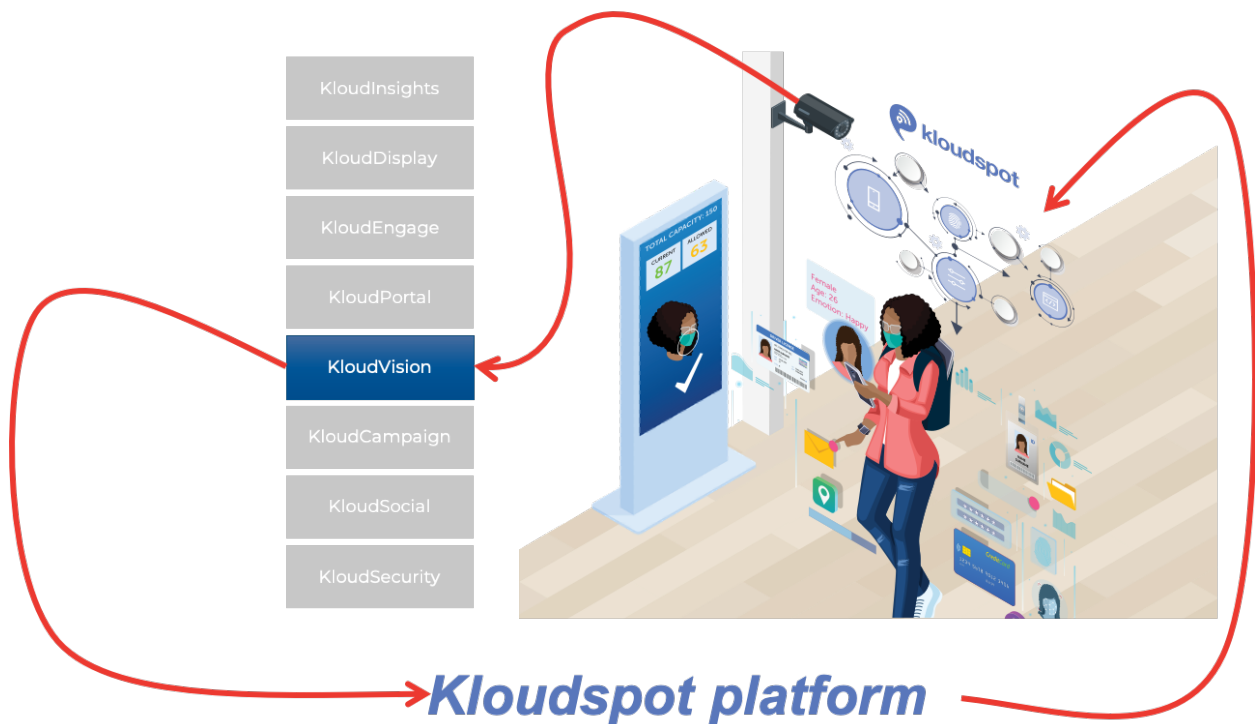


Queue line monitoring along with social distancing



Movement tracking, crowd surge monitoring and safety compliances

How Kloudvision works



The KloudVision video processing and AI analytics solution adds video data to Wi-Fi, Bluetooth, environmental sensors etc. to create comprehensive data mash-ups enabling a variety of use cases including:

- People counting (typically at entry and/or exit)
- Footfall surge, zone capacity and occupancy monitoring in specific locations
- Object detection for mask, safety vest, hard-hat helmet, safety goggles, dangerous goods
- Demographic detection for various attributes
- Social distancing

A controller is installed on the edge of your network to ingest the video via RTSP streams. The controller then runs all of the AI/ML image processing and streams metadata into our cloud for further analysis, rule/policy engine firing, and reports generation.

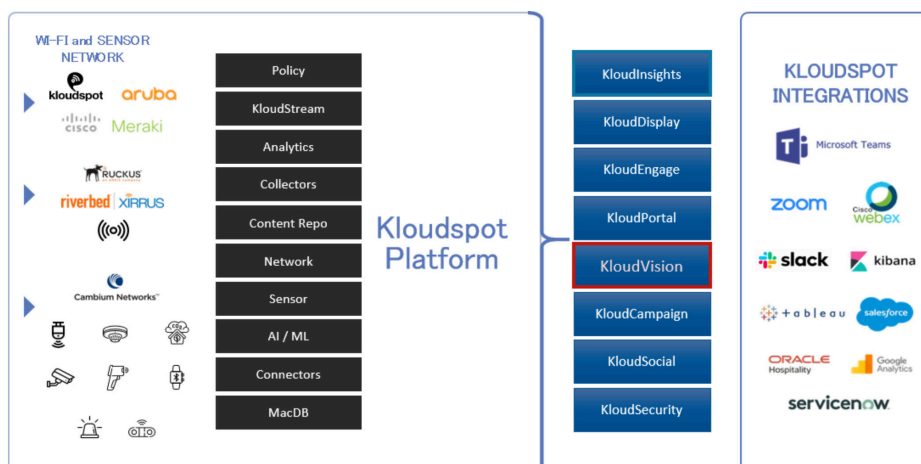
Unlike pure camera analytics solutions, the KloudVision service can work with any video streams, marrying the feeds with other intelligence in the network to produce insights, alerts and best courses of action.

This KloudVision service is data privacy protected as your video streams are examined, not stored. The computations and analyses are done on the KloudVision controller; and the Kloudspot rules engine enables developers to create privacy rules as they need or prefer.

Kloudspot is a powerful, customizable platform supporting a range of services that can be used to build transformational solutions for vertical industries, including retail, office spaces, financial services, enterprises, hospitality, events and venues, theme parks, farming and public sector agencies.

Integration with the Kloudspot Situational Awareness and Action Platform:

KloudVision integrates with the results from our KloudInsights platform and provides mashup data between WiFi, BLE and video. It is also integrated with Kloudspot's rules/policy engine to send notifications on topics including social distancing, occupancy, mask detection, object detection, targeted marketing, etc.



Requirements:

Infrastructure supported: As long as your infrastructure supports the network control protocol RTSP (Real Time Streaming Protocol), we support and can interact with your infrastructure.

What you get: For basic KloudVision functionality, you only need to purchase a KloudVision license for each camera on which you want to deploy. If you want digital signage, you need to have or purchase KloudDisplay™ as well.

Cameras required: The number of cameras depends on the use case. Capacity counting is one use case, social distancing is another one, etc. Some of these use cases can be combined but not all.

Baseline camera technology required: KloudVision can work with IP cameras and USB cameras from a wide variety of camera manufacturers. For IP cameras, we require a minimum of HTTP streaming capability if RTSP streams are not available.

Next: Gain additional awareness and value from video immediately.

[Click here to learn more.](#)

About Kloudspot

Founded in 2016, the Kloudspot Situational Awareness and Intelligence platform uses data collected from Bluetooth, Wi-Fi, environmental sensors and connected cameras, married with AI, to convert physical actions and movements of people and devices into digitally treatable data. Organizations can then leverage actionable insights to deliver compelling digital engagements to enhance a variety of experiences for their constituents across health and safety, lifestyle, and workspace and education.

Email: contact@kloudspot.com

www.kloudspot.com